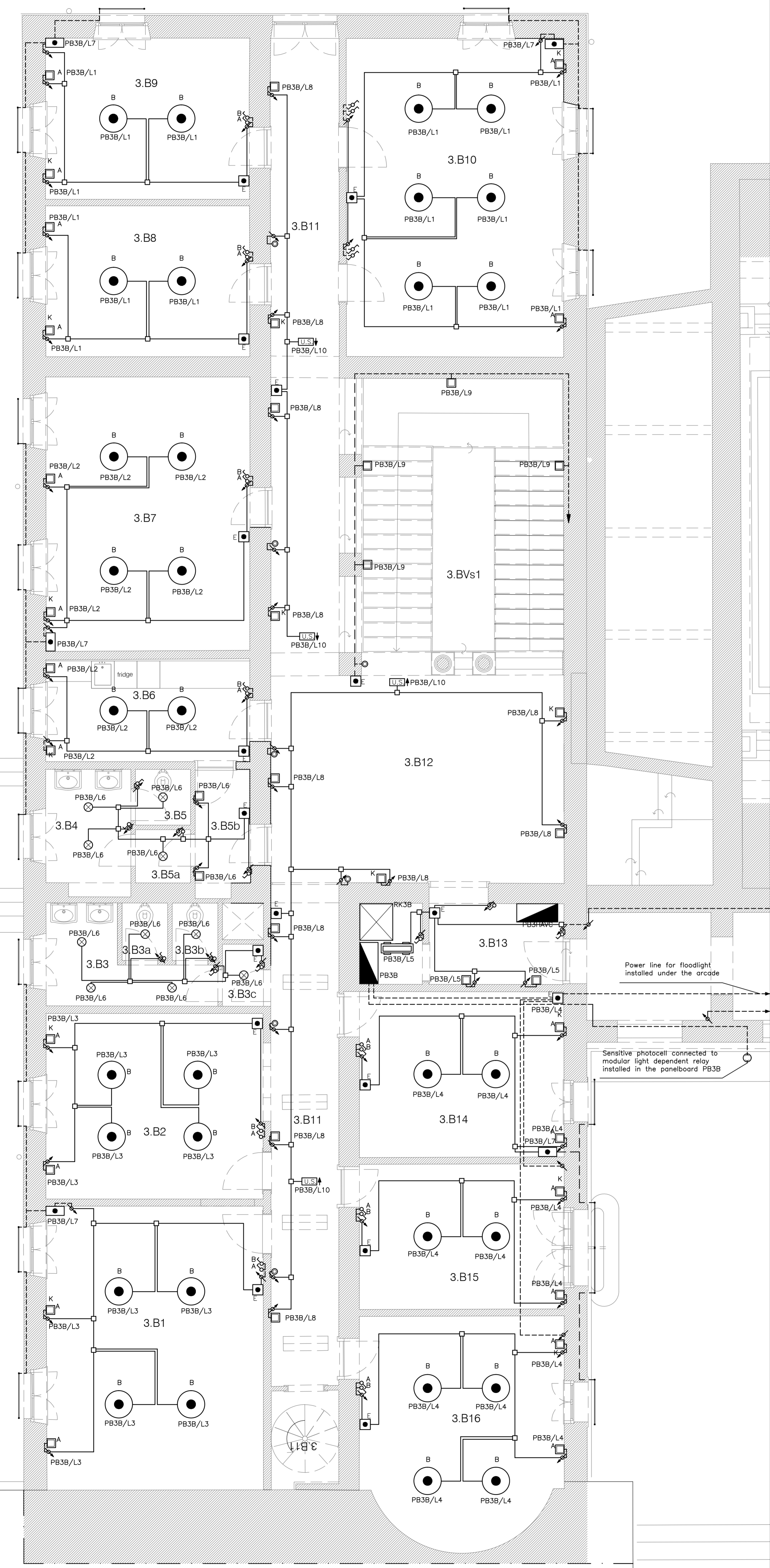


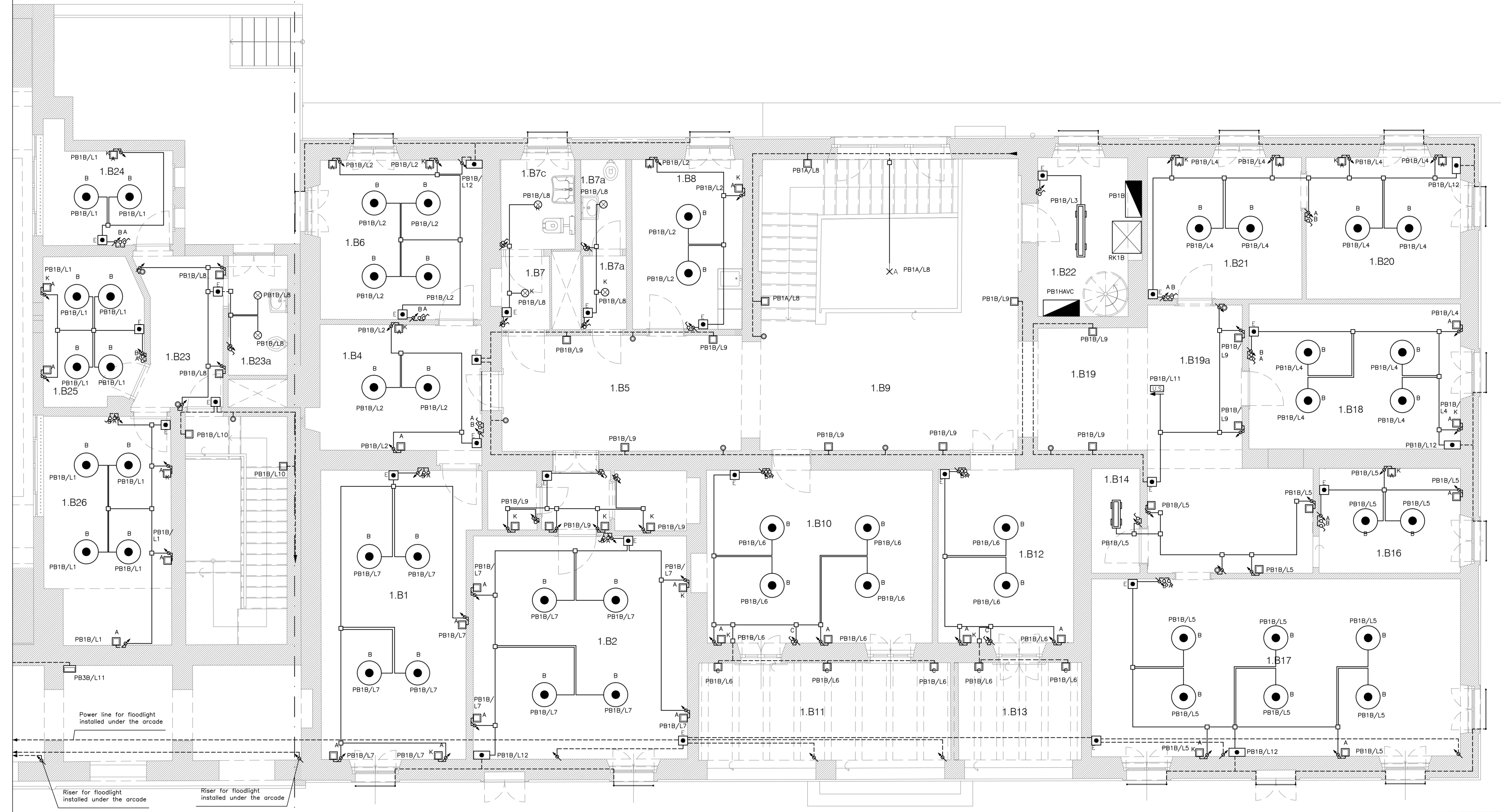
BUILDING 3

section +8.00 m section +5.90 m



BUILDING 1

section +5.90 m section +8.00 m



LEGEND

	Panelboard
	Swinging lamp, with direct and indirect lighting, fluorescent lamps 60W T16-R + 55W T16-R
	Wall lamp with fluorescent lamps 2x26W TC-TEL
	Lighting fixture recessed in the false ceiling, fluorescent lamps 2x26W
	Polycarbonate water-proof lamp with fluorescent lamps 2x18W
	Polycarbonate water-proof lamp with fluorescent lamps 2x30W
	Safety lamp, fluorescent lamp 1x18W, with storage battery, one hour autonomy
	Floodlight lamp 150W mounted under the arcade
	Aluminium structure with a Led strip medium emission, water-proof modular system lighting 4.5W
	Water-proof wall lamp with fluorescent lamp FLC 1x18W
	Emergency light kit with storage battery, one hour autonomy
	One-way switch
	Two-way switch
	Push button
	Flush mounting junction box for lighting system and sockets
	Sensitive photocell connected to modular light dependent relay
	Flexible PVC conduit, flush mounting wall or under floor
	PVC conduit, surface mounting on the wall or under the ceiling
	Ascent or descent PVC conduit
	Flush mounting junction box dimension 156x152x70mm, to contain the feeder for led lighting system
	Simple light point place under the ceiling

**CATHEDRAL OF BENGHAZI
BENGHAZI, LIBIA**

FINASSET
FINASSET GENERAL CONTRACTOR

Architectural, electric and mechanical systems project

Architect in charge and team coordinator: Arch. Carlo Formichi

**بحار تنمية و تطوير
المراكز الادارية**

DRAWING: **ES1.08** **WORKING DESIGN**
ELECTRICAL PATTERNS
BUILDING 1 AND BUILDING 3
LIGHTING SYSTEM AND SAFETY
LIGHTING SYSTEM
FIRST FLOOR

SCALE: 1:50

DATE: May 2009

UPDATING: