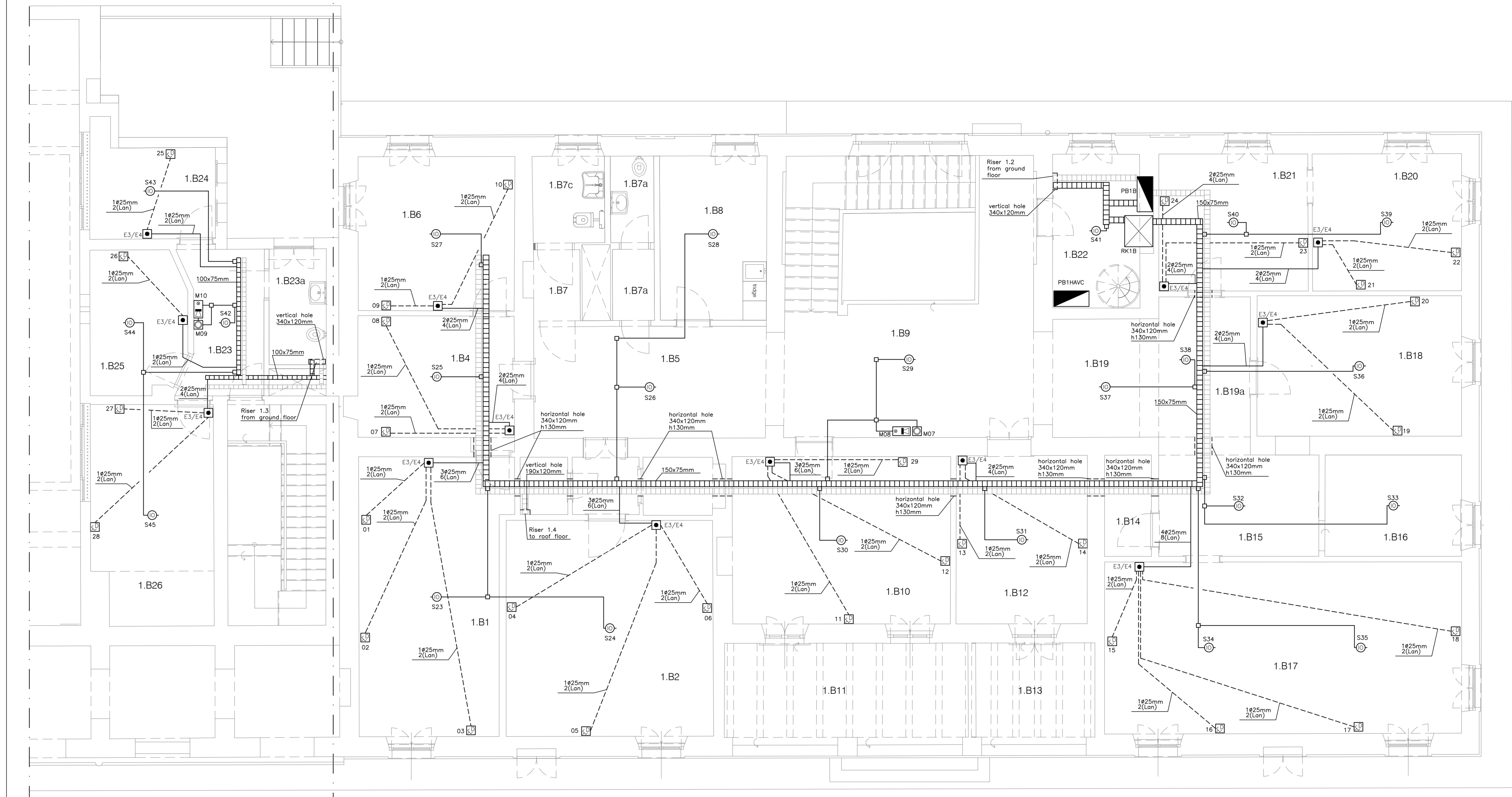
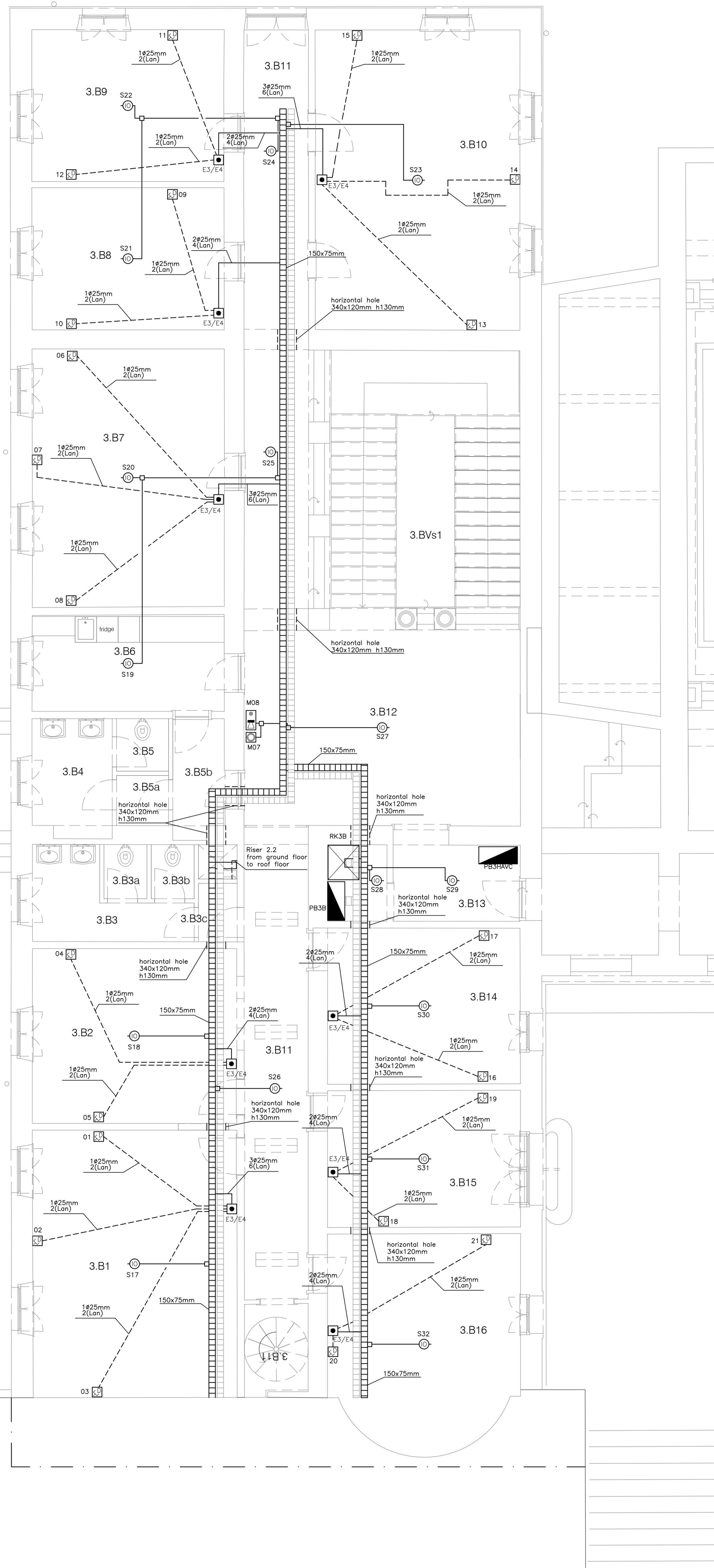


section +8.00 m section +5.90 m



**TABLE PROGRAMMING FIRE DETECTION SYSTEM**

ROOM NUMBER	LOOP	SMOKE DETECTOR	MANUAL CALL POINT	OPTICAL AND ACOUSTICAL REPEATER
3.201	01	S01		
3.202	01	S02	M01	M02
3.203	01	S03		
3.205	01	S04		
3.401	01	S04 - S05		
3.403	01	S06		
3.404	01	S07 - S08	M03	M04
3.405	01	S09		
3.406	01	S09 - S10		
3.407	01	S10 - S11	M05	M06
3.408	01	S12		
3.409	01	S13		
3.410	01	S14		
3.411	01	S15		
3.412	01	S16		
3.413	01	S17	M03	M04
3.414	01	S18	M05	M06
3.415	01	S19		
3.416	01	S20		
3.417	01	S21		
3.418	01	S22		
3.419	01	S23		
3.420	01	S24 - S25 - S26	M07	M08
3.421	01	S27		
3.422	01	S28 - S29		
3.423	01	S30		
3.424	01	S31		
3.425	01	S32		
3.426	01	S33		
3.427	01	S34 - S35		
3.428	01	S36	M09	M10
3.429	01	S40		
3.430	01	S41		
3.431	01	S42		
3.432	01	S43		
3.433	01	S44		
3.434	01	S45		

**TABLE PROGRAMMING FIRE DETECTION SYSTEM**

ROOM NUMBER	LOOP	SMOKE DETECTOR	MANUAL CALL POINT	OPTICAL AND ACOUSTICAL REPEATER
1.201	01	S01	M01	M02
1.202	01	S02		
1.203	01	S03		
1.205	01	S04		
1.404	01	S05		
1.405	01	S06		
1.407	01	S07		
1.408	01	S08		
1.409	01	S09		
1.410	01	S10		
1.411	01	S11		
1.412	01	S12 - S13		
1.413	01	S14		
1.414	01	S15		
1.415	01	S16		
1.416	01	S17	M03	M04
1.417	01	S18	M05	M06
1.417a	01	S19		
1.418	01	S20		
1.419	01	S21		
1.421	01	S22		
1.801	01	S23		
1.802	01	S24		
1.804	01	S25		
1.805	01	S26		
1.806	01	S27		
1.808	01	S28		
1.809	01	S29	M07	M08
1.810	01	S30		
1.812	01	S31		
1.815	01	S32		
1.816	01	S33		
1.817	01	S34 - S35		
1.818	01	S36		
1.819	01	S37		
1.819a	01	S38		
1.820	01	S39		
1.821	01	S40		
1.822	01	S41		
1.823	01	S42	M09	M10
1.824	01	S43		
1.825	01	S44		
1.826	01	S45		

**TABLE CABLE LAN - BUILDING 3A**

ROOM NUMBER	NUMBER OF GROUP DATA AND TELEPHONE JACK	CABLE NUMBER FOR SINGLE JACK "A"	CABLE NUMBER FOR SINGLE JACK "B"
3.A01	01	01A	01B
	02	02A	02B
	03	03A	03B
	04	04A	04B
	05	05A	05B
	06	06A	06B
	07	07A	07B
	08	08A	08B
	09	09A	09B
	10	10A	10B
	11	11A	11B
	12	12A	12B
	13	13A	13B
	14	14A	14B
	15	15A	15B

**TABLE CABLE LAN - BUILDING 1A**

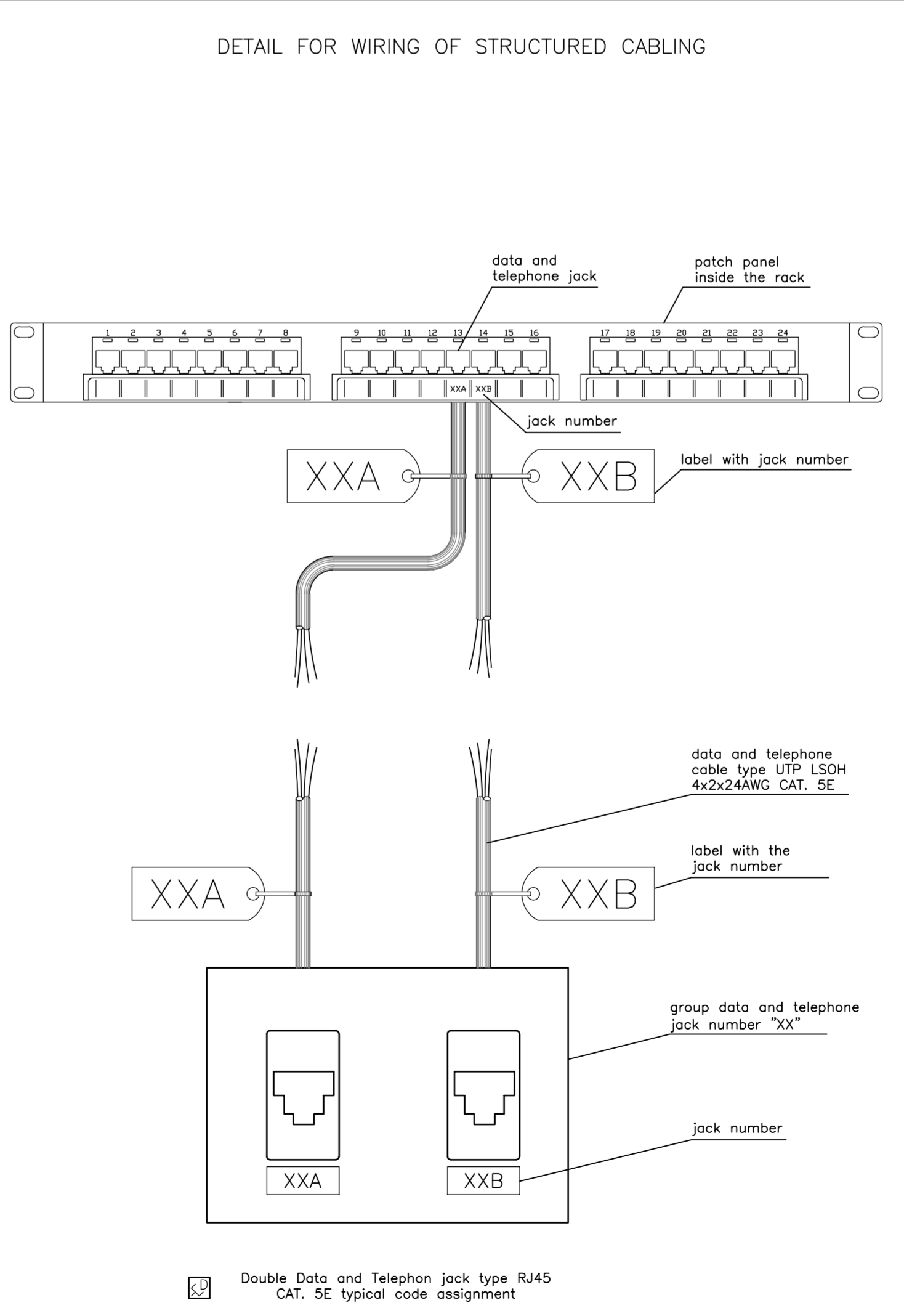
ROOM NUMBER	NUMBER OF GROUP DATA AND TELEPHONE JACK	CABLE NUMBER FOR SINGLE JACK "A"	CABLE NUMBER FOR SINGLE JACK "B"
1.A08	02	02A	02B
	03	03A	03B
	04	04A	04B
	05	05A	05B
	06	06A	06B
	07	07A	07B
	08	08A	08B
	09	09A	09B
	10	10A	10B
	11	11A	11B
	12	12A	12B
	13	13A	13B
	14	14A	14B
	15	15A	15B
	16	16A	16B
	17	17A	17B
	18	18A	18B
	19	19A	19B

**TABLE CABLE LAN - BUILDING 3B**

ROOM NUMBER	NUMBER OF GROUP DATA AND TELEPHONE JACK	CABLE NUMBER FOR SINGLE JACK "A"	CABLE NUMBER FOR SINGLE JACK "B"
3.B1	01	01A	01B
	02	02A	02B
	03	03A	03B
	04	04A	04B
	05	05A	05B
	06	06A	06B
	07	07A	07B
	08	08A	08B
	09	09A	09B
	10	10A	10B
	11	11A	11B
	12	12A	12B
	13	13A	13B
	14	14A	14B
	15	15A	15B
	16	16A	16B
	17	17A	17B
	18	18A	18B
	19	19A	19B
	20	20A	20B
	21	21A	21B

**TABLE CABLE LAN - BUILDING 1B**

ROOM NUMBER	NUMBER OF GROUP DATA AND TELEPHONE JACK	CABLE NUMBER FOR SINGLE JACK "A"	CABLE NUMBER FOR SINGLE JACK "B"
1.B1	02	02A	02B
	03	03A	03B
	04	04A	04B
	05	05A	05B
	06	06A	06B
	07	07A	07B
	08	08A	08B
	09	09A	09B
	10	10A	10B
	11	11A	11B
	12	12A	12B
	13	13A	13B
	14	14A	14B
	15	15A	15B
	16	16A	16B
	17	17A	17B
	18	18A	18B
	19	19A	19B
	20	20A	20B
	21	21A	21B
	22	22A	22B
	23	23A	23B
	24	24A	24B
	25	25A	25B
	26	26A	26B
	27	27A	27B
	28	28A	28B



**LEGEND**

	Panelboard
	Rock for data & telephone structured wiring
	Telephone exchange (installed in the Rack)
	Analog control panel for fire alarm
	Audio & Video entrance panel
	Audio & Video door entry system
	Electric lock 12Vac
	Optical-thermal (double technology) smoke detector
	Manual call point for fire alarm
	Optical and acoustical repeater for fire alarm
	Double data and telephone jack, type RJ45 Cat.5E
	Galvanized steel cable tray for protecting, supporting and transporting of data & telephone cables, fire alarm cable, etc.
	Flush mounting junction box for data & telephone system
	PVC flexible conduit, flush mounting in the wall or floor
	PVC conduit, surface mounting on the wall or under the ceiling
	Video Control System Cable type R55+9x0.75+3x1
	Data & Telephone cable type UTP LSZH 4x2x24 AWG Cat.5E
	Typical horizontal hole for cable tray passage. X: Width Y: Height H: Distance between upper level of the hole and the ceiling

**CATHEDRAL OF BENGHAZI BENGHAZI, LIBIA**

**FINASSET**  
FINASSET GENERAL CONTRACTOR

Architectural, electric and mechanical systems project

Architect in charge and team coordinator: Arch. Carlo Formichi

**بحار تنمية و تطوير  
المراكز الادارية**

**WORKING DESIGN ES3.05 ELECTRICAL PATTERNS BUILDING 1 AND BUILDING 3 DATA AND TELEPHONE SYSTEM, FIRE ALARM SYSTEM AND VIDEO ENTRYPHONE FIRST FLOOR**

DRAWING: ES3.05  
SCALE: 1:50  
DATE: May 2009  
UPDATING:

GENERAL NOTES:  
- All cables to be continuous with no splices  
- All cables to be labeled at both ends